

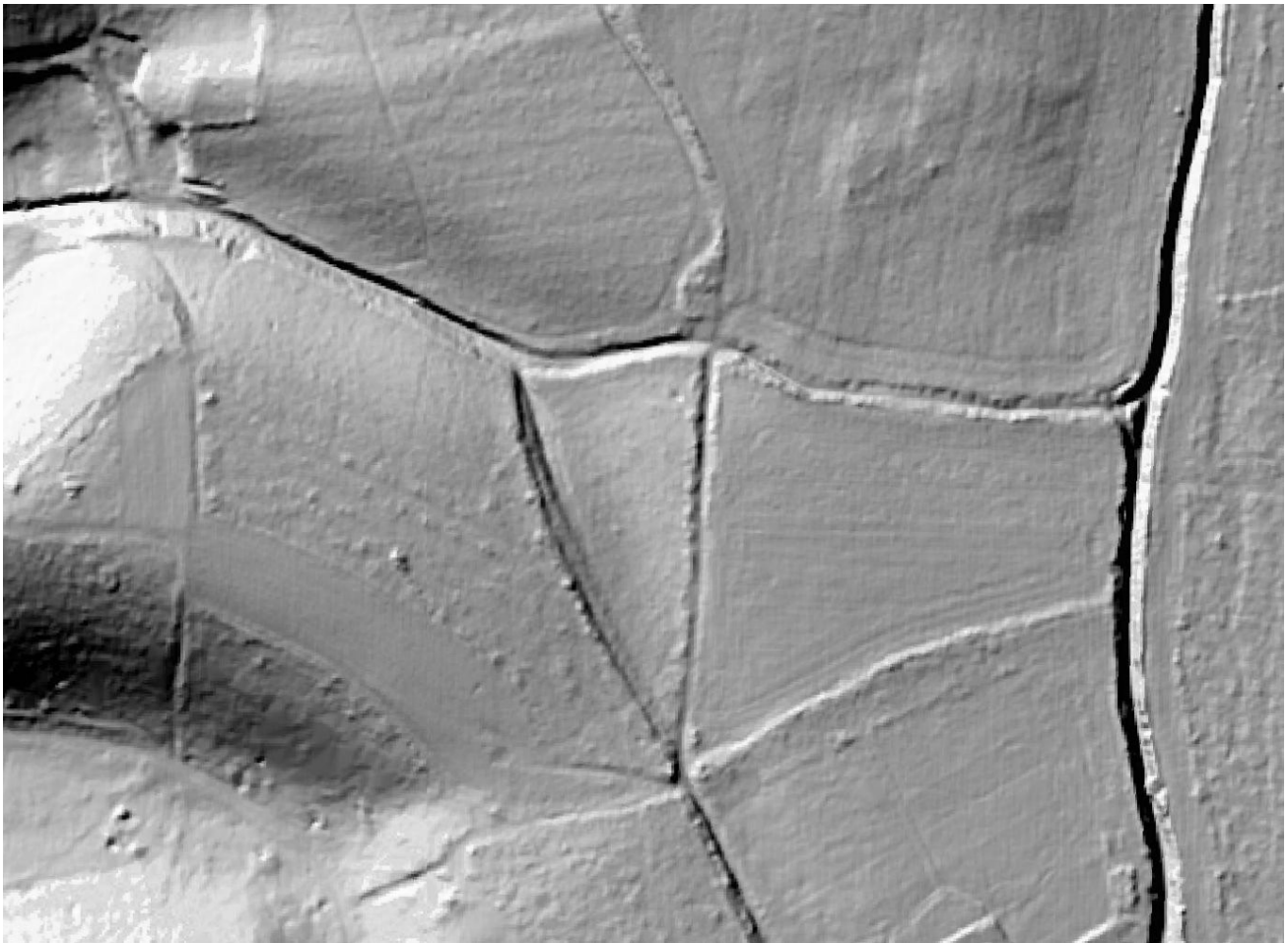


On the night of 1<sup>st</sup> October 1939 a Canadian pilot, [Flight Lieutenant Lionel Manley Gaunce](#), was on an army cooperation searchlight sortie and went into a spin. He lost control and baled out safely in cloud, leaving the plane L1937 to crash in an area which was then woodland.



The location is 0.5 miles south east of Kilnhanger and 8 miles south west of Dorking.

Both aircraft and bombs are shown in: [Surrey World War Two Bomb Incident Map](#).



*LIDAR of the triangular woodland crash site*

*The area in July 2026*



*F/L Gaunce collecting his DFC  
at Buckingham Palace  
On 23<sup>rd</sup> August 1940*



*Also locally, on 13<sup>th</sup> April 1950 a Vampire crashed  
at Blackmore, Northcote Lane, Shamley Green*